

# Haus

B Oberdorfstrasse 9

1.OG Whg. Nr. B 11

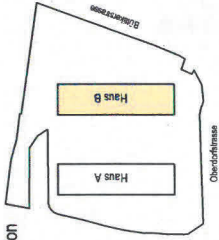
3 1/2 Zimmer-Wohnung

90.90m<sup>2</sup> Nettowohnfläche

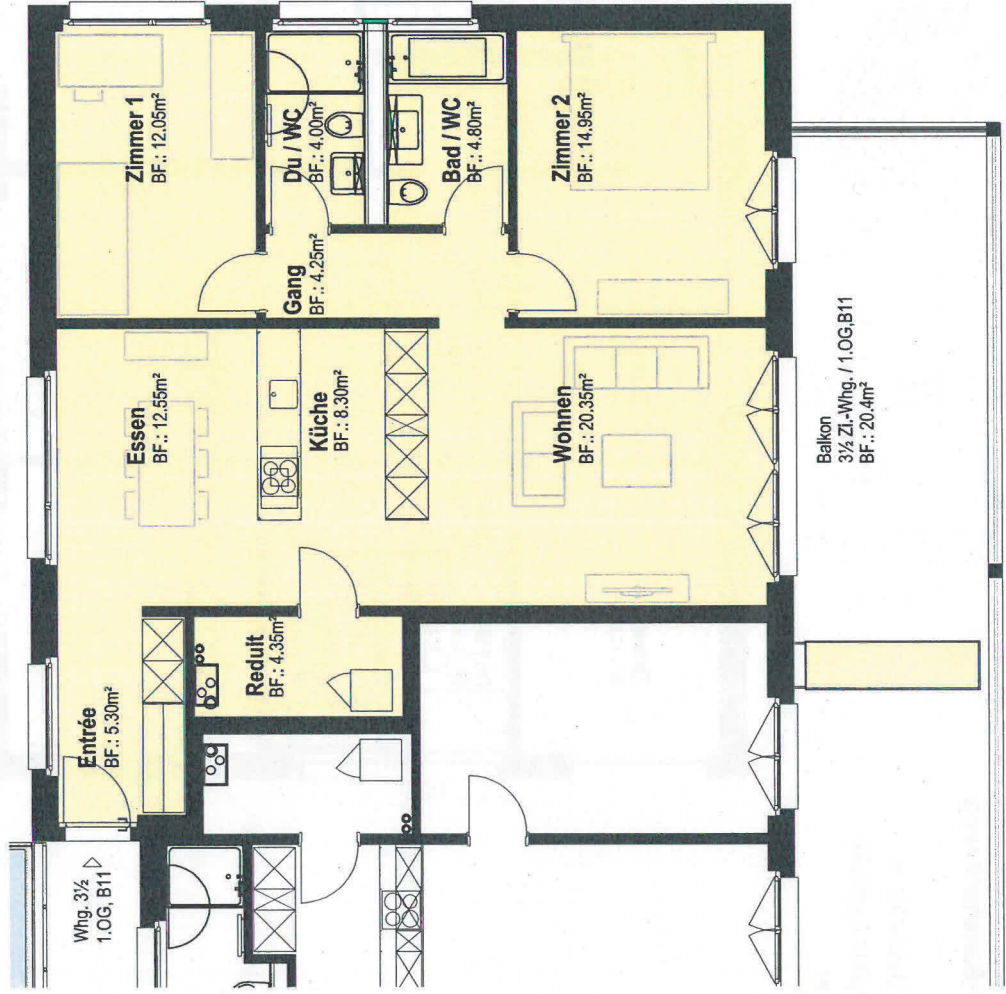
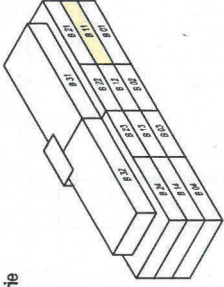
20.40 m<sup>2</sup> Balkon (gedeckt)

10.00 m<sup>2</sup> Keller

Situation



Isometrie



0m 5m  
Mst. 1:100

